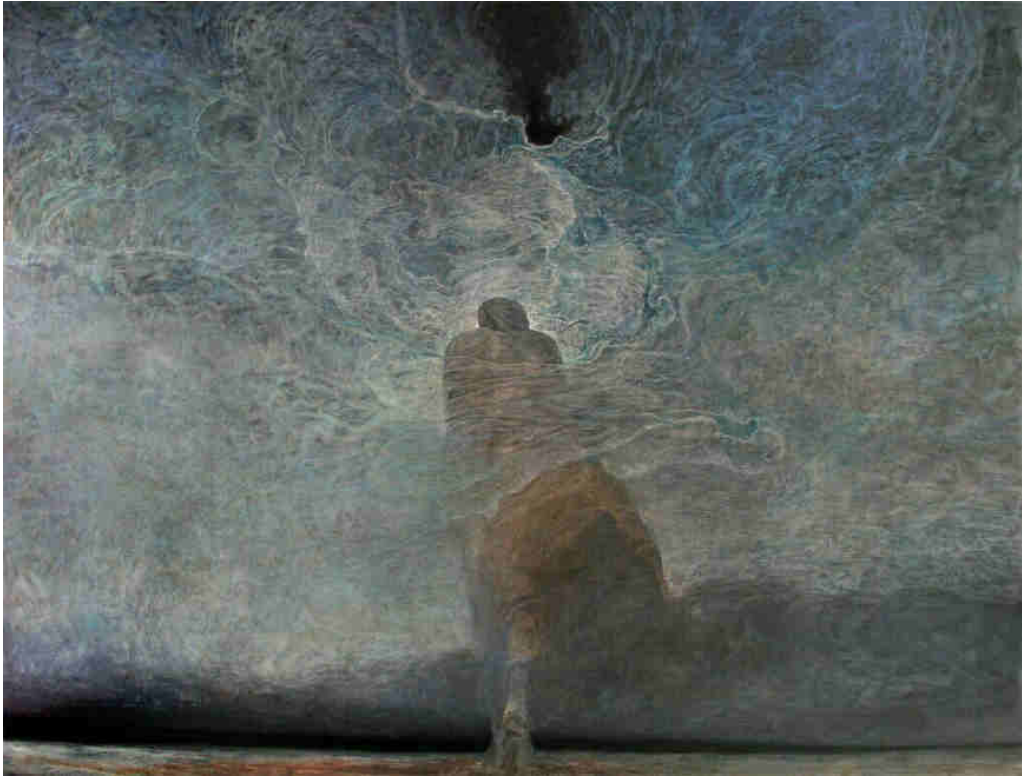


https://youtu.be/AAWm_eKr6UU



Dziennik

malaowania obrazow Beksa





A

B



C

D

E

A,B – Rozległe rany kłusane z ubytkiem części policzka i wargi dolnej po pogryzieniu przez psa. C – Stan po zeszytciu rani i wypełnieniu ubytku płatem z języka pokrytym przeszczepem skóry. D,E – Wczesny wynik leczenia.

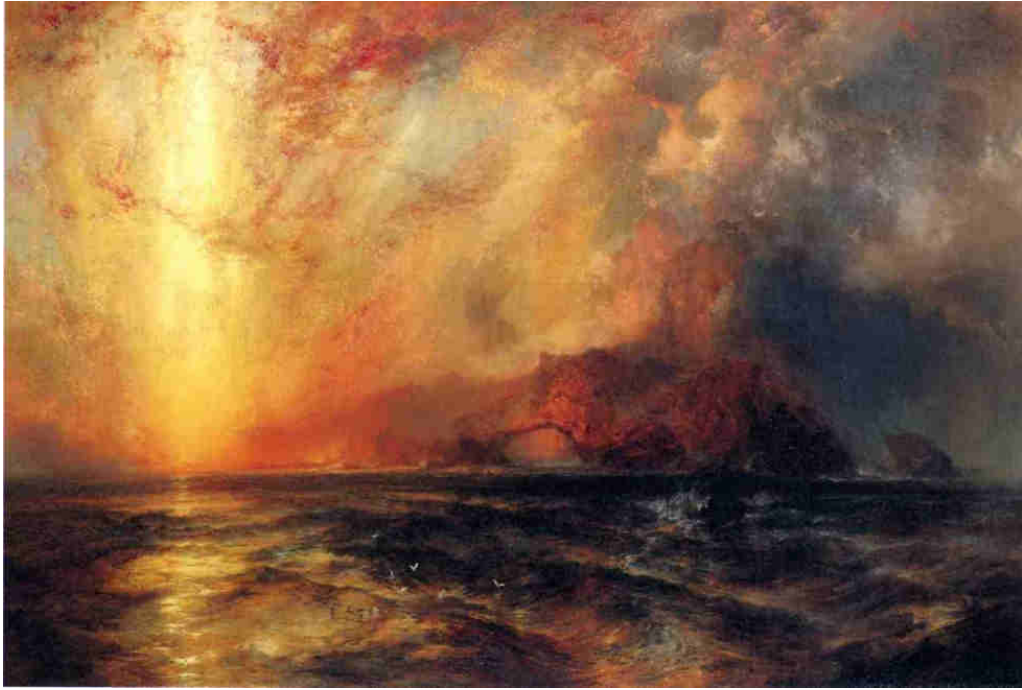
A,B – A dog-bite wound – extensive wound on both cheeks and lips with partial defect of the left cheek and lower lip. C – Status after wound suturing and defect closure with tongue flap covered with skin graft. D,E – Early result of treatment.

























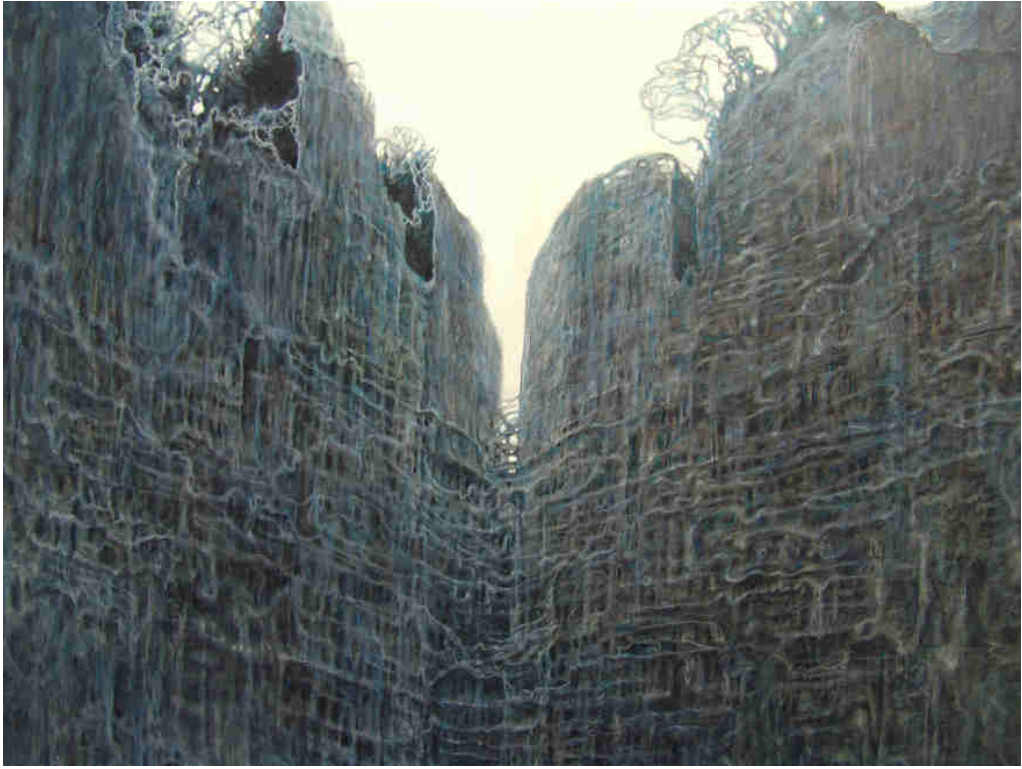










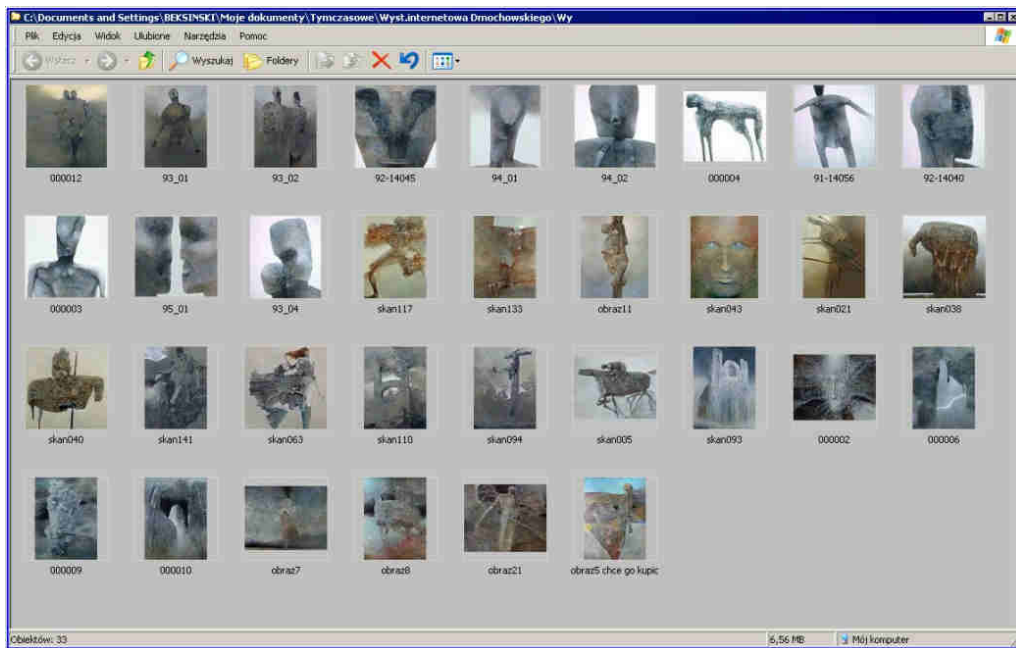
























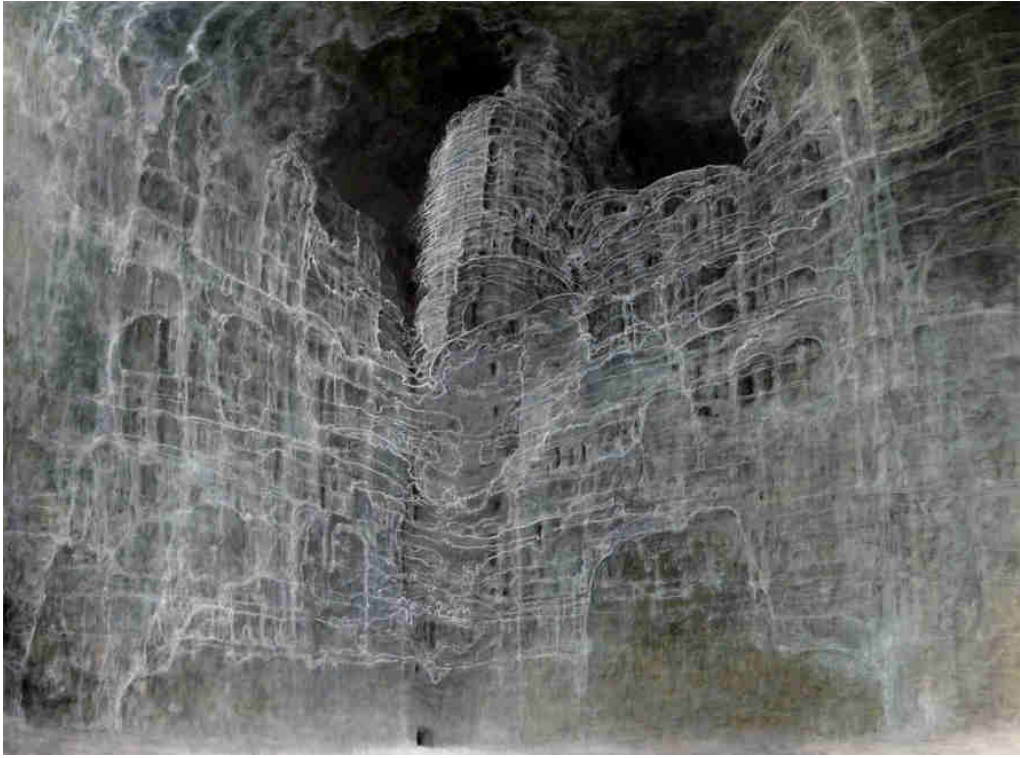






















133 = Y5
28.9.99
98/132



134 = Q7
3.11.99
98/132



135 = B8
28.11.99
98/132



136 = V2
25.12.99
98/132



137 = C4
22.1.2000
98/132



138 = L1
1.2.00
73/92



139 = P9
7/92
103.00



140 = F5
28/132
144.2000



141 = H1
98/132
15.4.2000



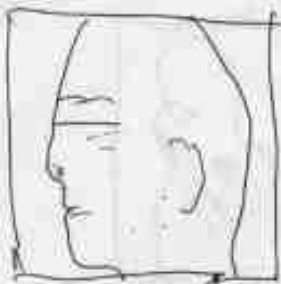
142 = EA
98 x 132
3.5.00



143 = R0
98 x 92
14.5.00



144 = Z6
98 x 92
6.6.00



109 = H9
98 x 98 ✓
10.9.98



110 = E5
98 x 132 ✓
9.10.98



111 = RN
98 x 132 ✓
19.10.98



112 = ZA
98 x 132
15.11.98



113 = T0
73 x 92
3.12.98



114 = W6
73 x 92
16.12.98



115 = 0E
98/132 ✓
29.12.98



116 = G3
5.1.99
132/132 ✓



117 = YE
132/132 ✓



ZU
98/98
1.2.98



TA
98x98
13.2.98



WU
98x132
22.2.98



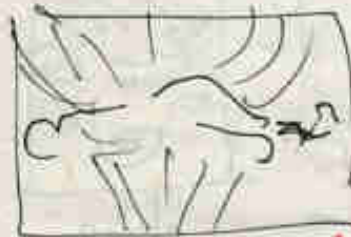
OG
98x132
8.3.98



GE
98x98
24.3.98



Y2
98x98
18.4.98



QE 98x132
9.5.98



BS 98x98
24.5.98



A7 98x98
5.6.98



88x92
7.7.98



88x92 P4 3.8.98



88x92
F1 25.9.98



3.7.97.
98x132
TN



13.7.97
98x132
WA



6.8.97
98x132
OO



5.9.97
98x132
GG



YE
17.9.97
98x132



22
28.9.97
98x132



BE
21.10.97
98x132



AS
132/98
4.11.97



F2
132/98
16.11.97



F4
98/98
27.11.97



H1
98/98
9.12.97



E9
98/98
4.1.98



R5
98/98
12.1.98



98/98
154 = ID
29.11.00



88/92
155 = P6
3.12.00



98 x 132
10.12.00
158 = FN



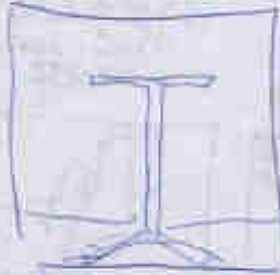
88 x 92
2.1.2001
157 = HA



88 x 92
158 = EO
10.1.2001



159 = RG
98 x 152
29.1.2001



98 x 98
12.2.2001
160 = Zt



98 x 132
29.2.2001
161 = T2



98 x 132
15.3.2001
162 = WE₂



145 = TE
TE
88 x 92



146 = WZ
M. 7. 2000
98 x 132



147 = OE
20. 7. 2000
98 x 132



148 = GS
5. 8. 2000
98 x 132



149 = YZ
29. 8. 2000
98 x 132



150 = QZ
15. 9. 2000
98/132



151 = XZ
30. 9. 00
98 x 132



152 = V4
19. 10. 00
98 x 132



153 = C1
6. 11. 00
98 x 132

DO JEHO ANNO 98
INTEGRALIA



233 = 16
 30/131
 5.4.2004



234 = PE
 67/132
 14.4.2004



235 = FZ
 91/152
 24.6.2004



236 = HE
 91/152
 11.5.2004



237 = ES
 30/131
 24.5.2004



238 = RT
 81/132
 3.6.2004



239 = ZB
 75/151
 13.6.2004



240 = N2
 75/152
 1.7.2004



241 = U4
 9.7.2004
 22/95



170 = IS
18.7.2001
98/132



171 = PV
8.7.02
13.9.2001



172 = FN
9.7.132
5.9.2001

DO 7ED KWEST: JFOTIKENFOWANE
LUTY 2002



173 = HO
98x98
29.9.2001



174 = EG
98x98
1.2.2002



175 = RE
98x98
16.2.2002



176 = Z2
98x98
4.5.2002



177 = TE
98x132
19.9.2002



178 = WS
3.4.2002
98/132

DATE



163 = OS
28/152
26.3.2001

DO TEGO LISTY SĄ ZKŁADANE
ZOSTAŁY REPRODUKOWANE Z WYJĄTKIEM

154 = I9

155 = R6

160 = ZT

GDYŻ OBRAZKI TE UPRZYTOU A

160 = ZT CIĘŻKIEJ DESKIE

PAZDZIAŁ



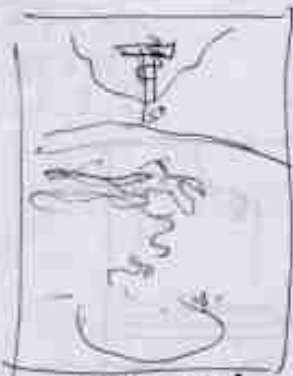
164 = G7
31/152
6.4.2001



165 = Y2
08/08
14.4.2001



166 = L2
29.4.2001
28/152



167 = X4
2.6.2001



168 = V1
17.6.2001



169 = O3
3.7.2001
28/152



177 = 07
 98 x 132
 5.4.2002

Do TEG
 Amélia
 Sforzato
 10.4.2002



98 x 98
 24.4.2002
 140 = M2



98 x 98
 30.4.2002
 181 = L4



98 x 98
 15.5.2002
 182 = X1



98 x 98
 14.6.2002
 183 = V9



78 x 92
 30.8.2002
 184 = C5



98 x 132
 18.7.2002
 185 = 1N



186 = PA
1.8.2002
98/132



187 = FO
12.8.2002
98/132

NA ZAMOUKOWE



188 = H6
98 x 98
24.8.2002



189 = EE
98 x 132
21.9.2002



190 = R2
98 x 132
27.9.2002



191 = ZE
98 x 98
7.10.2002



192 = Ts
98 x 98
11.10.2002
[ZAMOUKOWE]



193 = W7
98 x 98
16.10.2002
[ZAMOUKOWE]



194 = O8
6.11.2002
98/132



195 = D2
98 x 98
17.11.2002



196 = M4
98 x 132
25.11.2002

98 x 98
9.1.2003

31.1.2003
98 x 98



197 = L1
27.11.2002
98 x 132



198 = X3



199 = V5



210 = HZ
212 = MA
14.6.2003



213 = L9
25.6.2003



214 = X5
10.7.2003
6.7.132



215 = VU
20.7.2003
26.6.92



216 = CA
3.8.2003
25.5.132



217 = 10
12.9.2003
8.8.92



218 = FG
2.9.2003
25.5.132



219 = FE
25.5.132
19.9.2003



220 = HZ
25.5.132
20.9.2003



221 = EE
26.10.2003
6.10.2003



222 = RS
26.10.2003
6.7.132



223 = Z7
19.12.2003
20.9.92



224 = TB
28.12.2003
20.9.92



225 = U2
7.1.2004
27.9.92



226 = SK
12.1.2004
28.1.132



227 = D1
25.1.2004
20.9.92



228 = MB
8.2.2004
28.1.132



229 = LS
20.2.2004



230 = YU
20.2.2004



231 = UN
25.2.2004



232 = CO
25.2.2004

48/26
DIPKA
KARTKA



200 = CN
6.2.2003
28 x 92



201 = 1A
12.2.2003
92 x 75



202 = FB
19.2.2003
75 x 92



203 = FG
5.3.2003
98 / 152



204 = HE
19.3.2003
67 x 152



205 = E2
18.5.2003
92 x 152



205 = E2
75 x 92
22.5.2003



206 = RE
1.4.2003
98 x 152



207 = 25
21.4.2003
92 x 152



208 = T7
29.4.2003
67 x 152



209 = W8
67 x 152
8.5.2003



210 = S2
75 / 152
18.5.2003



211 = D4
75 x 92
1.6.2003



212 = M2
75 x 92
8.6.2003





118 = QS
 98/132 ✓
 26.1.99.



119 = BF
 98/132 ✓
 5.2.99.



120 = A8
 98/132 ✓
 17.2.99.

Do Archa Anizacji Stereocytologicznej przez
 Kosikowa w Marcu 1999



98/132
 121 = P2
 5.4.99.



98/132
 122 = L4
 15.4.99



98/132
 123 = P1
 28.4.99



124 = F9
 22.5.99



125 = H5
 98/132
 1.6.99



126 = EN
 98/132
 27.6.99



127 = RA2
 14.7.99
 98/132



128 = Z0
 1.8.99
 98/132



129 = T6
 98/132
 15.8.99.



130 = LHC
 98/132
 29.8.99



131 = O2
 98/132
 5.9.99



132 = GE
 13.9.99
 98/132





212 = JZ
212 = MA
11.6.2003



213 = L9
25.4.02
10.6.2003



214 = X5
10.7.2003
6.7.132



215 = VN
20.7.2003
25.4.02



216 = CA
5.8.2003
25.4.132



217 = 10
18.9.2003
28.4.02



218 = P6
1.9.2003
25.4.132



219 = FE
25.4.132
14.9.2003



220 = HZ
25.4.132
25.4.2003



221 = EE
28.4.132
6.10.2003



222 = RS
26.10.2003
6.7.132



223 = 27
19.12.2003
28.4.02



224 = TB
21.12.2003
28.4.02



225 = U2
7.1.2004
28.4.02



226 = S4
18.1.2004
28.4.132



227 = D1
25.1.2004
28.4.132



228 = M3
8.2.2004
28.4.132



229 = 15
20.2.2004



230 = X6
20.2.2004



231 = VN
20.2.2004



232 = 10
20.2.2004

28/08 DRUŽBA
KARPKA



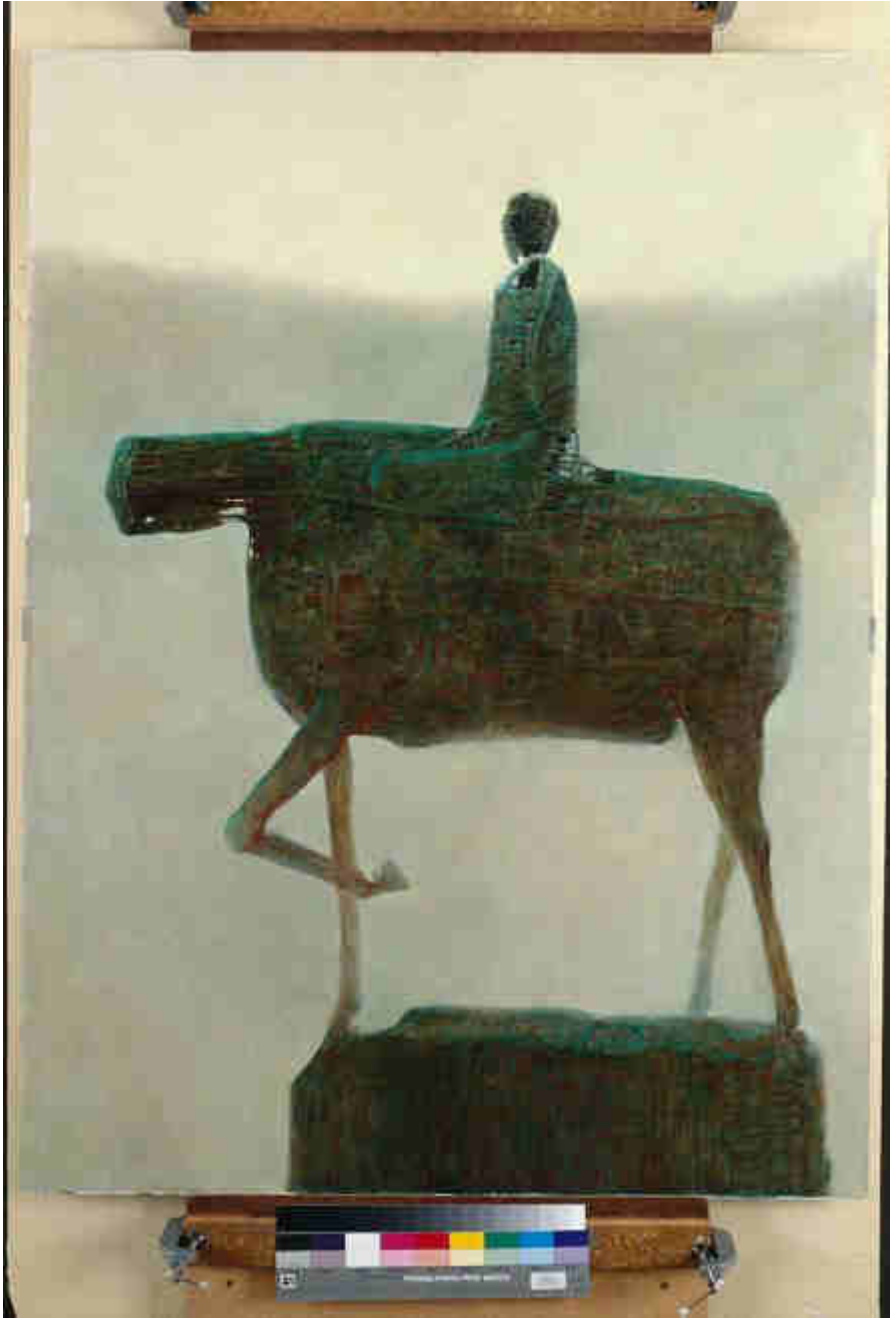




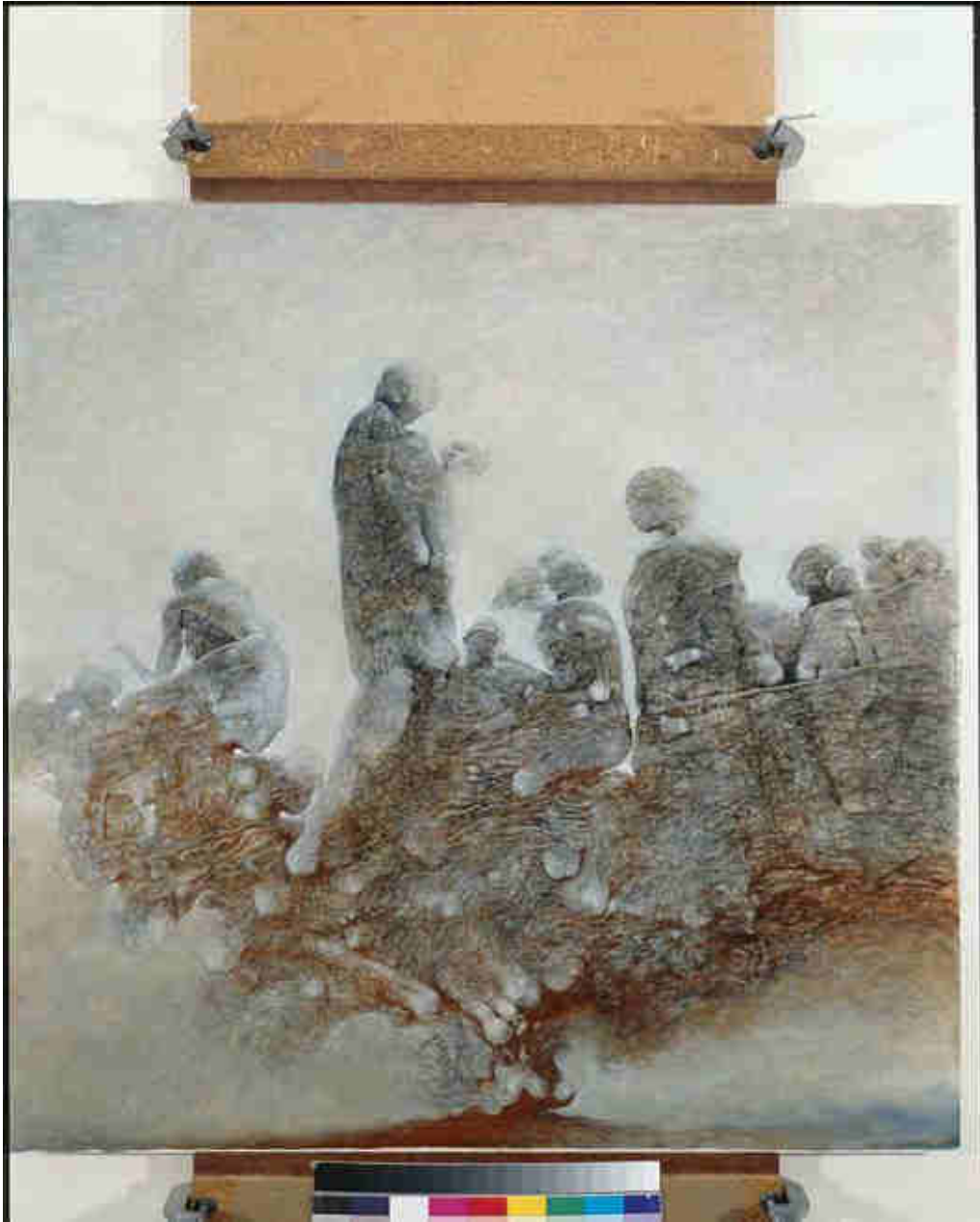


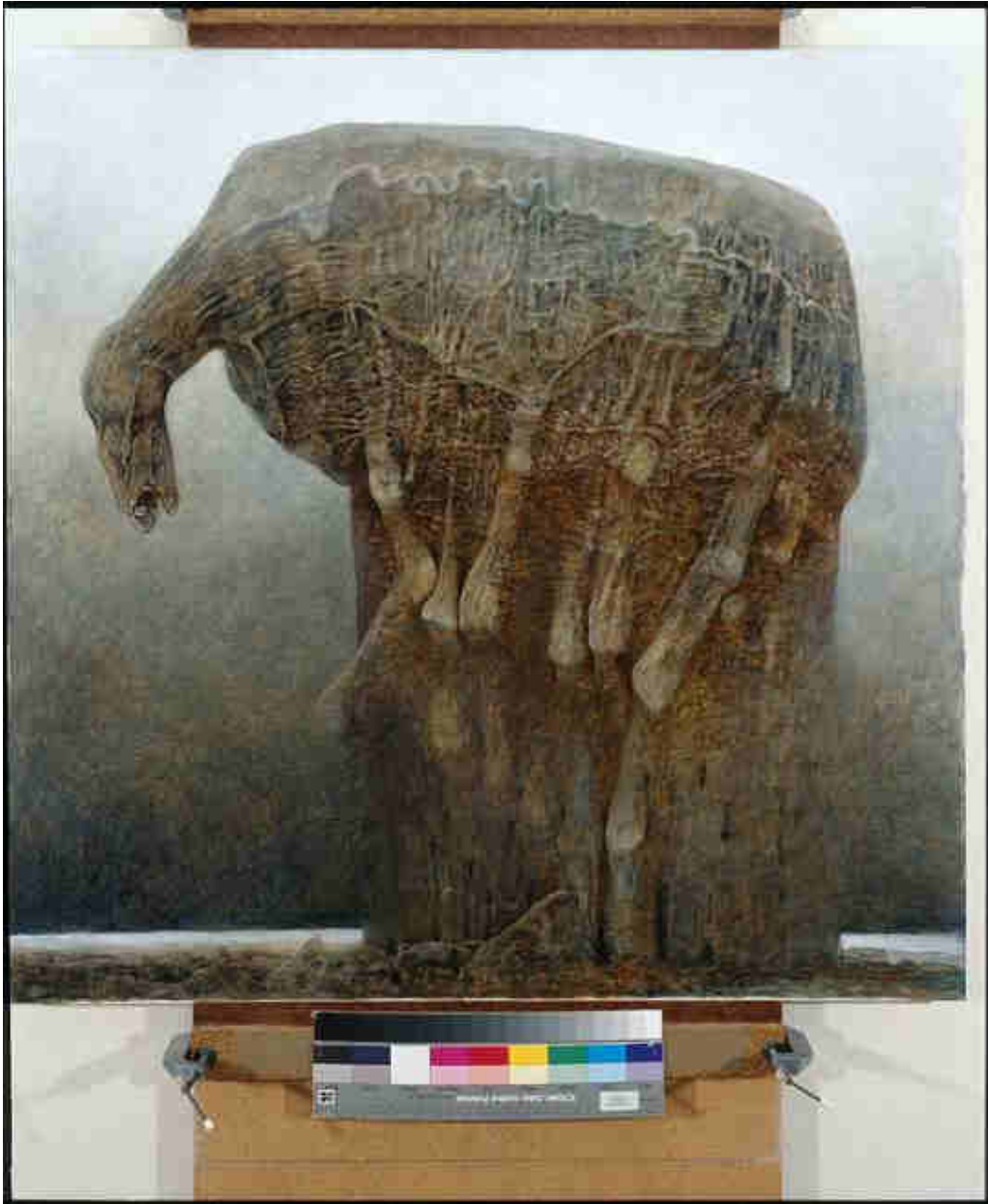


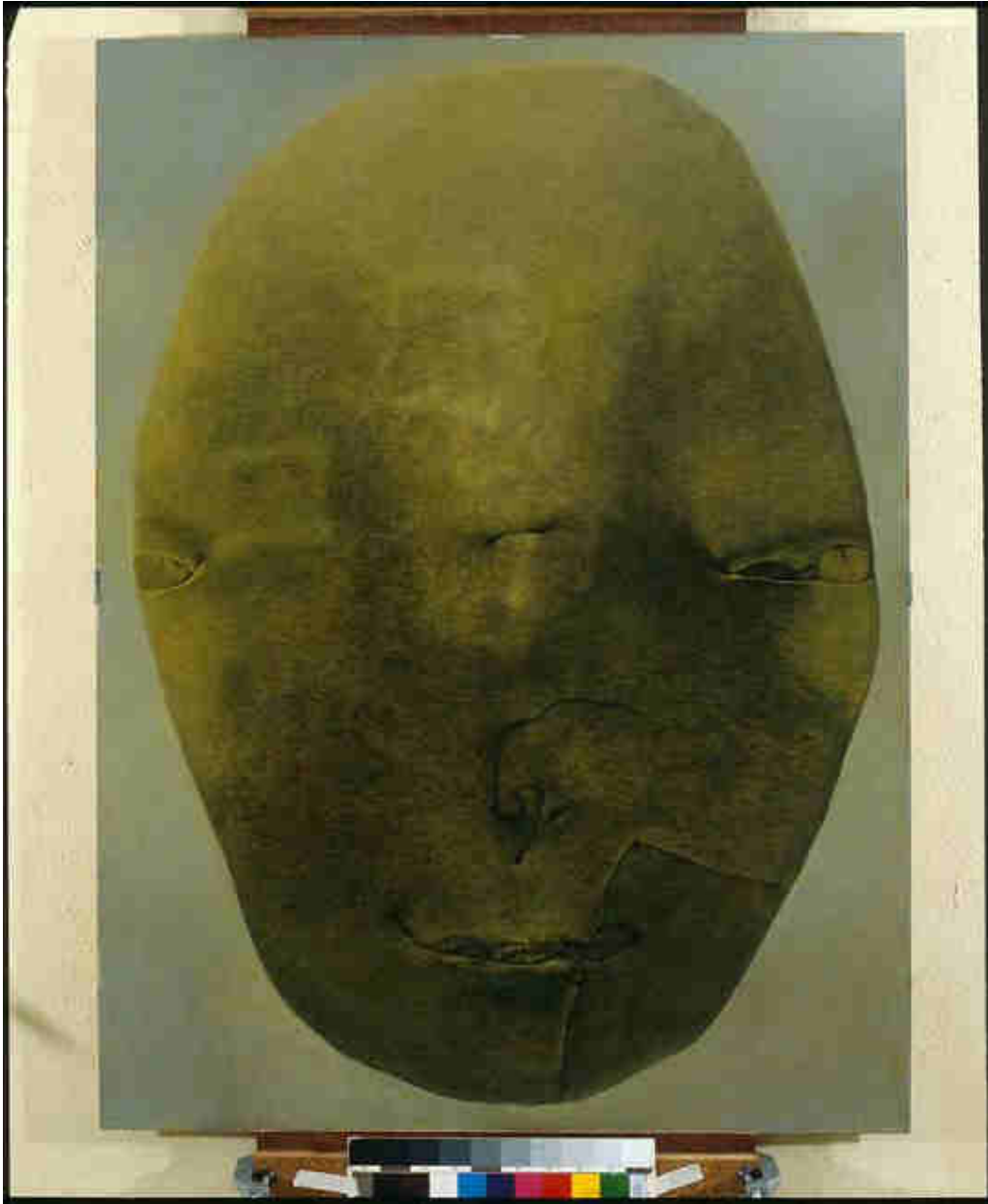






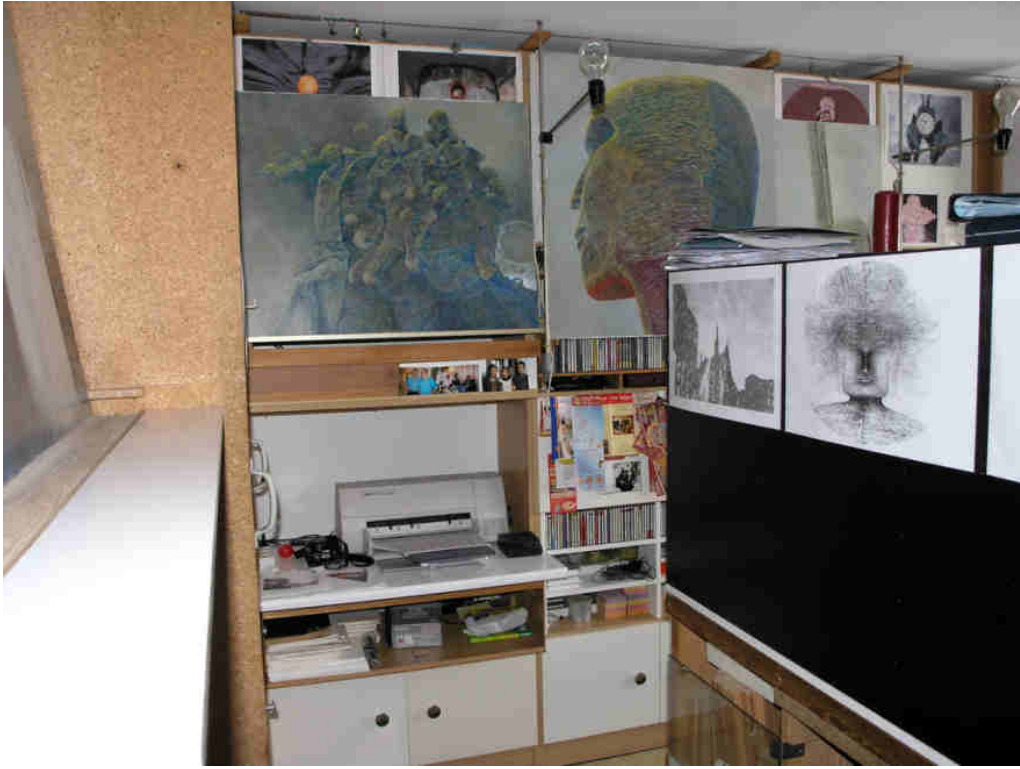




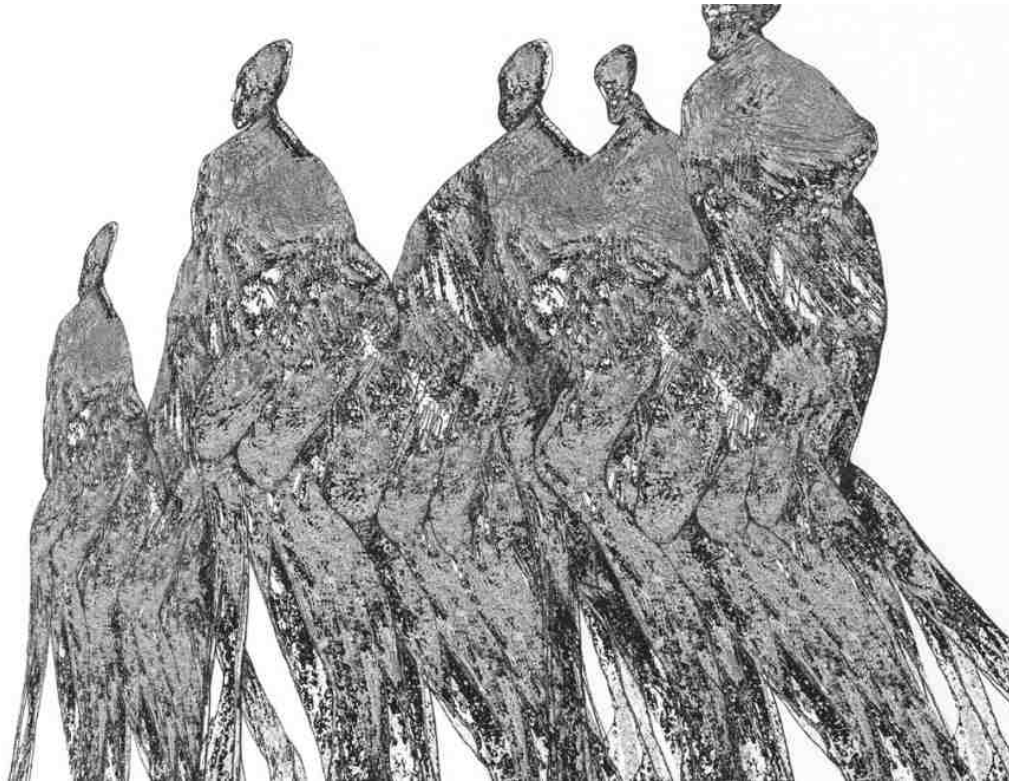


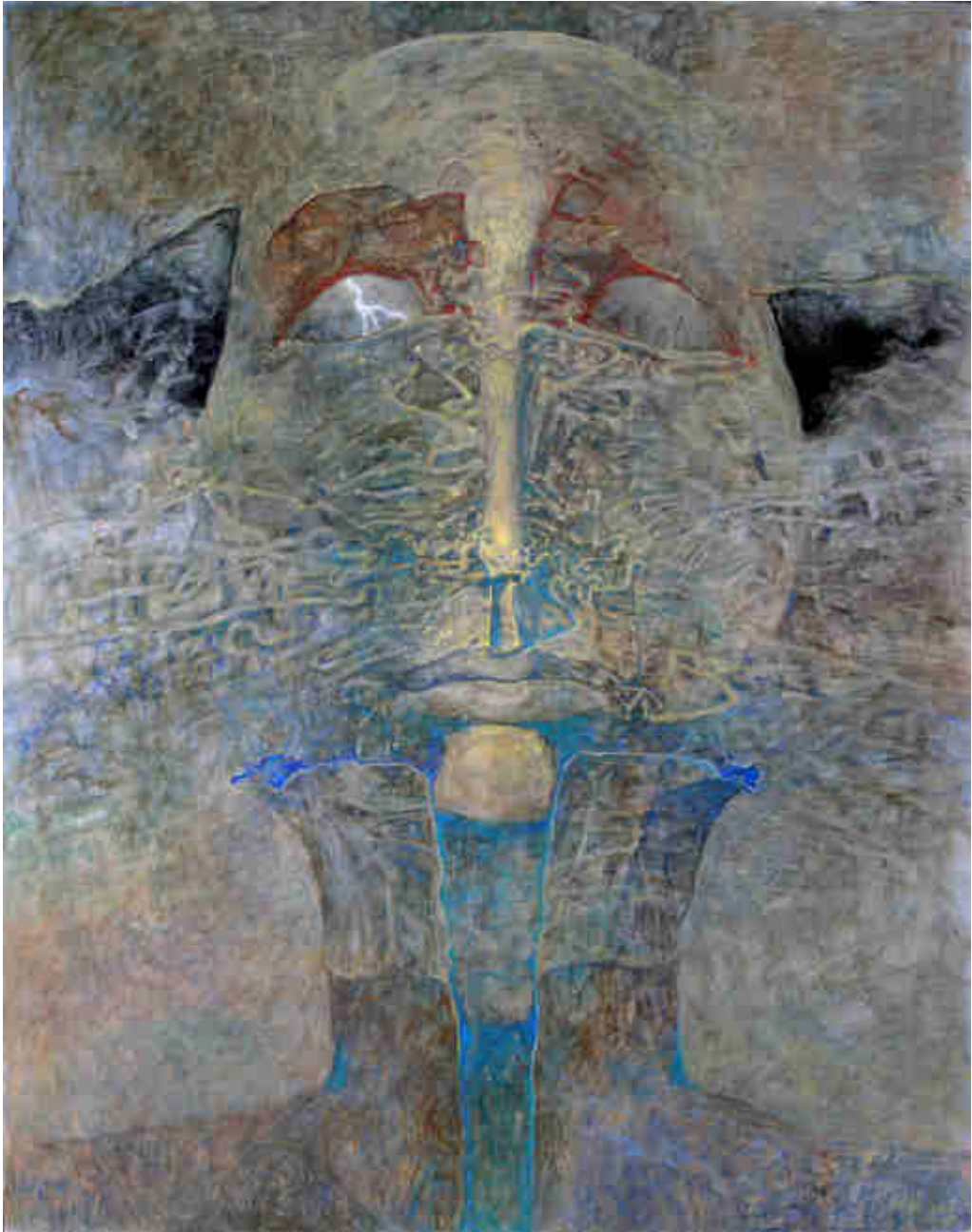


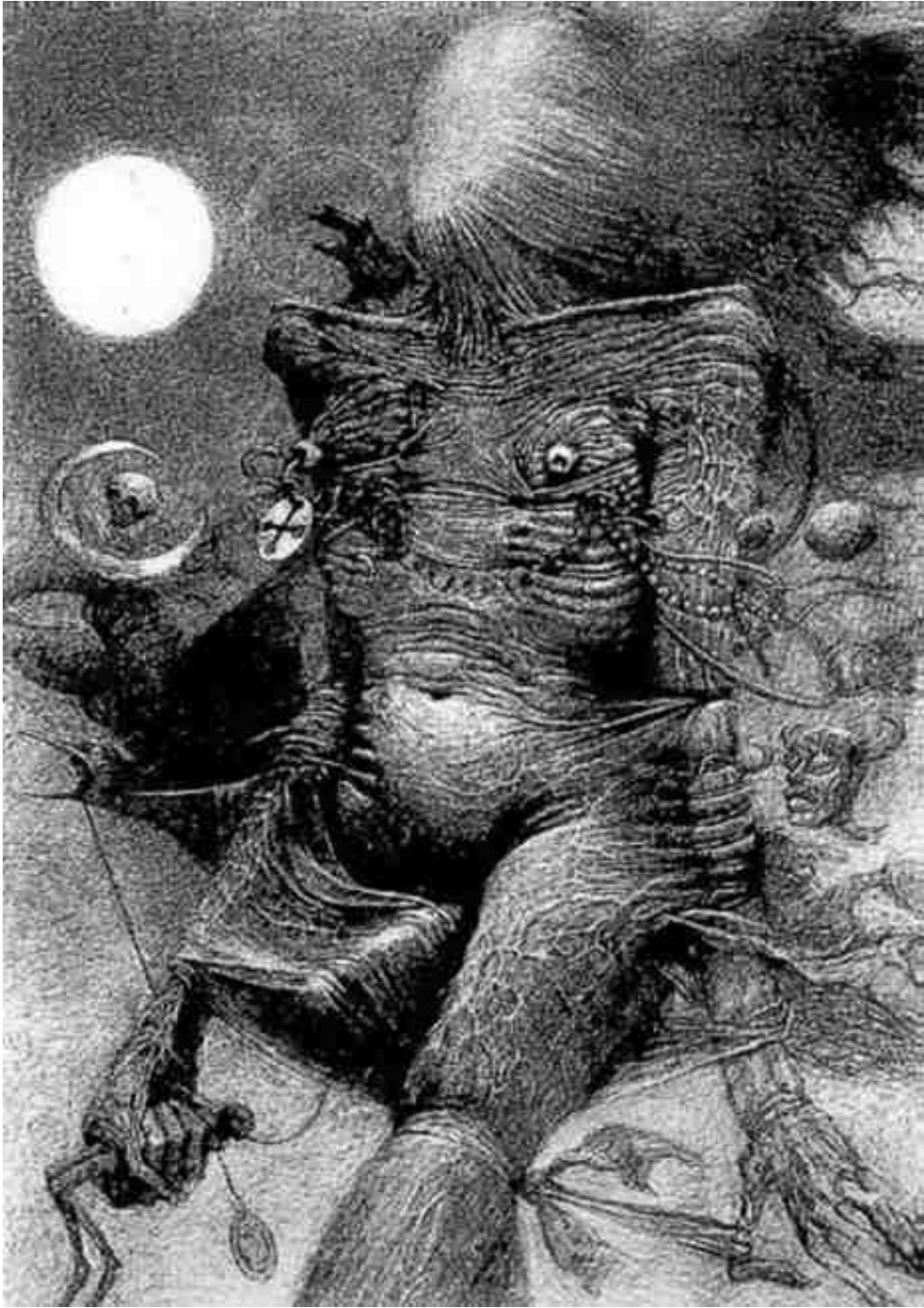




























VISIONS DES TENEBRES

50 obrazów z kolekcji Anny i Piotra Dmochowskich

Częstochowa | Warszawa | Gdańsk

2004







życzenia - Europa Zachodnia (ISO)

Plik Edycja Widok Narzędzia Wiadomość Pomoc

Odpowiedz Odpowied... Prześlij dalej Drukuj Usuń Poprzednia Następna

Od: b.feliszewska@uw.edu.pl
Data: 8 kwietnia 2004 16:42
Do: bex@acn.waw.pl
Temat: życzenia

Wzycze Panu, zdrowych, spokojnych Owi!t Wielkanocnych.
Beata Feliszewska z Biblioteki Uniwersyteckiej
-Jeszcze raz dziękuje za przekazanie pracy na aukcje na rzecz biblioteki. Jest ona zaprezentowana przy stronie internetowej BUW, www.buw.uw.edu.pl, ze strony g3ównnej link: aukcja na rzecz BUW, zapraszam do odwiedzenia

